

Powerful Software

Multi-sample types

Blood, Plasma, Serum, Urine

Complete diagnostic solutions

Self-developed reagents and QC

Support more than 25 items

Powerful expanding function with USB

Powerful data management

100,000 results storage

Workload statistics

Calibration and QC

Magnetic card auto-calibration, save user cost

3-level QC, L-J graph

Smart testing

Multi results with only one sampling

Support to request batch of samples

Display left times in real time

Intelligent alarm information and solutions

Easy maintenance

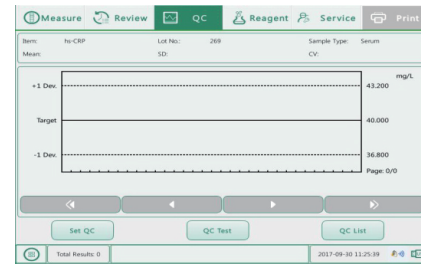
Easy routine maintenance

One-click operation

Dirty cuvettes detection

Specific probe cleaning solution

ID	Item	Result	Reference	Unit	Ref Range	Test Time
16	hs-CRP	10.000	842	mg/L	0.500 - 10.000	11.20.13
15	hs-CRP	10.000	840	mg/L	0.500 - 10.000	11.19.13
14	hs-CRP	21.141	862	mg/L	0.500 - 10.000	11.18.13
13	hs-CRP	10.000	829	mg/L	0.500 - 10.000	11.17.13
12	hs-CRP	10.000	846	mg/L	0.500 - 10.000	11.16.13
11	hs-CRP	10.000	825	mg/L	0.500 - 10.000	11.15.13
10	hs-CRP	22.9781	859	mg/L	0.500 - 10.000	11.14.13
9	hs-CRP	8.200	841	mg/L	0.500 - 10.000	11.13.13
8	hs-CRP	20.122	856	mg/L	0.500 - 10.000	11.12.13
7	hs-CRP	0.500	855	mg/L	0.500 - 10.000	11.11.13




mti diagnostics

Technical Specifications

Applications	Item	Sample type
Diabetes monitoring	HbA1c	whole blood
Inflammation, bacterial infection	CRP SAA	whole blood/plasma/serum whole blood/plasma/serum
Clotting monitoring	D-Dimer	plasma
Renal function	mALB	urine
Renal injury	CYS-C	serum/plasma
Rheumatoid monitoring	ASO RF CCP	serum/plasma serum/plasma serum
Immunological disease	IgA IgM IgG C3 C4	serum/plasma
Cardiovascular disease	HS-CRP	whole blood/plasma/serum

More parameters are available and unable to list all here, please contact manufacturer for more details.

AUTO IA500
Fully-auto Specific Protein Analyzer



Mti-diagnostics GmbH
Limburger Straße 45
D-65510 Idstein, GERMANY

Tel: +49 (0) 6126-9595 262
Fax: +49 (0) 6126-9595 264
Email: info@mti-diagnostics.com

A Classic You Can Rely On

Reliable Hardware

> Features

- Fully-auto test procedure, only 1 press to finish test
- Up to 60 tests/hour
- Principle: Nephelometry
- Low reagent and sample consumption
- Magnetic card auto-calibration
- 3-level QC, L-J graph
- Items: HbA1c, CRP, SAA, RF, ASO, C CP, D-Dimer, mALB, HS-CRP, IgA, IgG, IgM, C3, C4, etc
- 10.1-inch touch screen
- 24-hour non-stop cooling system



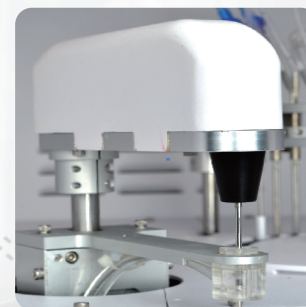
AS120 is ASGC latest automated specific protein analyzer, since we are so experienced at specific protein analyzer with semi-auto AS150 and AS154 under NGSP certified, in order to satisfy more customer needs, we are so dedicated to work on the automated specific analyzer and it finally comes to the market and it is proved to be successful in the domestic market.

> Effortless operation

10.1-inch touch screen with intuitive navigation
Only one click to finish the test automatically

> Cost effective

Only 5-15 ul sample for analysis
Economic plastic cuvette, reusable
Magnetic card calibration, save your reagent



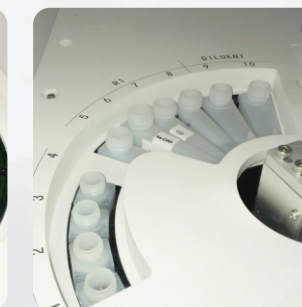
PROBE



WASH STATION



REACTION DISK



REAGENT DISK

> Reaction system

Solid heating, rapid and stable, free-maintenance
Temperature: $37 \pm 0.1^\circ\text{C}$
32 economic plastic reusable cuvettes

> Reagent system

10 reagent positions
Special reagent bottle to avoid reagent waste
24-hour non-stop on-board cooling
Peltier cooling: $2-8^\circ\text{C}$ to assure reagent stability

> Optical system

Long life laser diode
Completely-sealed system, free maintenance

> Input/Output

Internal thermal printer, auto and manual print
Support external printer, LIS
Interface: RS 232, USB port

> Wash station

4 step wash, each cuvette will be washed 9 times
White block to remove bubble
Cleaning solution to avoid carry-over
Water consumption: $< 2.5\text{L/hour}$

> Probe assembly

Liquid level detection
Auto-depth adjustment
Anti-collision design
Interior and exterior high pressure auto-cleaning
Sample volume: 5-15ul
Reagent volume: 30-350ul
Aspiration precision: 0.1ul/ step, $\text{CV} \leq 0.2\%$

> Others

Net weight: 60 Kg
Dimension: 620 mm \times 520mm \times 620mm
Voltage: AC100 ~240V, 50/60 Hz
Power: $\leq 200\text{VA}$
Work temperature: $10-30^\circ\text{C}$
Air pressure: 70.0 kPa~106.0kPa